

your **HARBORCREEK** ...*something for everyone!*

Best Wishes

for a

**Warm and Wonderful
Holiday Season**

and a

Prosperous

and

Joyful New Year



ACE SUPPLY

MULCH • STONE • COMPOST • SAND • SOIL

5051 IROQUOIS AVE ★ 814-899-3644



Husqvarna
READY WHEN YOU ARE



Easy to use
with electric starting, power
steering and adjustable handles*



Powerful clearing
performance
with two-stage system



Year-after-year durability
with rugged, heavy-duty
construction

**VISIT OUR
WEBSITE**

SCAN HERE →

OR

GO TO:

WWW.ACE-SUPPLYCO.COM



CLIP HERE FOR SAVINGS!

~\$5 OFF~

YOUR PURCHASE OF \$50 OR MORE

Coupon valid for 1 time use for a single transaction. All discounts are taken before sales tax. Coupon **MUST** be present at time of purchase. Expires 11/30/24

Stop us if you're heard this before – but what a great summer and fall it has been. Beautiful summer weather allowed us to enjoy boating and sunset watching at Shades, enjoying baseball and softball games at HC Community and Slade parks, and great concerts throughout the township. Plenty of roadwork improvements took place on many roadways and that work continues well into the fall.

Foodies have had the chance to welcome Art's Bakery and Vintage Wood Fire BBQ and look forward to Jersey Mike's opening soon – so lots of good things happening in Harborcreek Township.

As Old Man Winter approaches, residents should rest assured that the township crews are ready to deal with any weather that is thrown their ways – and ask for your help by not parking along township roadways between October 15th and April 15th. This allows plows to efficiently maneuver roads and remove snow more safely in your neighborhood.

We (along with Santa and Mrs. C) are looking forward to seeing you at the Harborcreek Light Up Night on Friday, December 13th as we welcome in the Christmas Holiday Season.

Wishing you all a very Merry Christmas and Happy New Year 2025.

Harborcreek Township...
a Great Place To Live, Work, and Play.

Tim, Steve, and Dean



Harborcreek Township

5601 Buffalo Road
Harborcreek, PA 16421
814-899-3171

www.harborcreektownship.org

Normal Business Hours:

Monday–Friday 8:00am–4:30pm
Closed Weekends and Holidays

Supervisors:

Tim May, Dean Pepicello, Steve Oler

Connie Cruz – Zoning Administrator
Shelley Hull – Board Secretary
Steve Seidler – Comptroller
Dave Eades – IT
Brian Benovic – EMA
Elena Dodge – Code Enforcement
Michelle Hannold – Receptionist/Roads and Parks Secretary

The Road & Parks Crew:

| | |
|------------------|----------------|
| Mason Burke | August Neff |
| Kurt Heidecker | Matt Taft |
| Greg Rzodkiewicz | Ted Harmle |
| Doug Doerr | Bob Anderson |
| Jason Moczulski | Aaron Jeffress |
| Nick Taccone | Tony Gerg |
| Tyler Scarpino | Eric Aikens |
| James Downey | Justin O'Hara |

Harborcreek Township Sewer Auth.

814-899-9191

Harborcreek Township Tax Collector

Pam Brink
5601 Buffalo Road
Harborcreek, PA 16421
814-899-0818
Tuesday–Friday, 9:30–1pm and 2–5pm

CONTENT

| | |
|---|-------|
| <i>In The Community</i> | 2–17 |
| <i>Husky Happenings</i> | 18–21 |
| <i>Historical Society</i> | 22–23 |
| <i>Volunteer Fire Departments</i> | 24–25 |
| <i>Development Update</i> | 26–27 |

Local Government Offices:

District Justice Lisa R. Ferrick
4230 Iroquois Avenue
Erie, PA 16511
814-451-6516

State Representative Bob Merski – 4th District
District Office
3921 Buffalo Road
Erie, PA 16510
814-455-6319

State Senator Dan Laughlin
1314 Griswold Plaza
Erie, PA 16501
814-453-2515

Interested in advertising in “your Harborcreek” magazine and reaching over 17,000 residents of Harborcreek Township?

Please contact Teresa Perrotto at
Tperrotto@harborcreek.org
or call: 814-397-1001

Would you like to contribute content to “your Harborcreek” magazine? Please forward information and pictures (if applicable) to YourHarborcreek@harborcreektownship.org or call 814-899-3171. Harborcreek Township maintains full editorial rights and will include content when content room is available.

MAGAZINE DEADLINE:

The next deadline to submit content to be considered for “your Harborcreek” magazine is March 10, 2025.

Photo credits in this issue of “your Harborcreek”, all or in part, courtesy of *John D. Fox Photography* and Kevin Soles.



IN THE COMMUNITY



S'mores at the HC Light Up Night

Whether you've enjoyed them in the past or this year is your first time, visiting the S'mores Station at the Harborcreek Light Up Night is becoming a great tradition for families, the Harborcreek Community and the three HC Volunteer Fire Departments. For the last several years the departments have hosted a warming and S'mores station – a chance for residents to visit with local fire department volunteers as well as make and enjoy a freshly made sweet treat. In addition, it's a chance for these brave volunteers to show the community some of the equipment and vehicles that keep our township safe.



Chief Jim Hawrilyw of Fairfield Hose Company proposed the S'mores Station a few years ago to Santa and his elves – and shortly after that the Chiefs of Brookside and Harborcreek joined in to start this warm holiday tradition. All three Chiefs and their crews have become expert S'more makers and can help you safely make a delicious snack.

Make sure to stop by and visit the Brookside, Fairfield and Harborcreek volunteers at the

HC Light Up Night on Friday, December 13th – you'll be glad you did !

Erie's Remote Start Experts!

ENORMIS
MOBILE SPECIALTIES



MCEP Certified Technicians
Learn About Remote Starts on Our Website:

www.enormis.net

5250 Buffalo Road/ Rt 20 Harborcreek

899.8885

 Like Us on Facebook!
facebook.com/ENORMIS



Harborcreek Community Engagement Team presents

December 13

Don't miss it!



Visit our tent at "Light Up Night" and receive a Christmas friendship bracelet (while supplies last) and a chance to get a picture with a life-sized cut-out of Taylor (and Travis).

Harborcreek 2024 LIGHT UP NIGHT

FRIDAY, DECEMBER 13th 6-8pm

Come Visit Santa & Mrs. Claus!

HCCET presents

"Swiftly Wrapped in Holiday Cheer:
A Taylor Swift Photo Experience"

Live Reindeer

HOLIDAY CRAFTS

ACTIVITIES WILL BE JUST
WEST OF THE HC MUNICIPAL
BUILDING

PARKING AVAILABLE AT THE
MUNICIPAL BUILDING.

CHRISTMAS
MUSIC by
DJ BRIAN SHANK

Horse Drawn Trolley Rides

Meet Your Favorite
Christmas Characters!

Christmas Cookies Provided by
Harbor Fence and Decks

Make S'mores with the 3
H.C. Volunteer Fire Departments

Hot Chocolate and Cider Provided by
Fyzical Therapy, Harborcreek.

Christmas Carols Provided by the
Harbor Creek High School Vocal
Ensemble.

THE MEDICARE ROADMAP

DO YOU HAVE QUESTIONS?
I'LL GUIDE YOU THROUGH THE PROCESS

WHEN CAN I ENROLL?

HOW DO I ENROLL?

WHAT ARE THE DIFFERENCE
BETWEEN THE PLANS?

WHICH PLAN IS BEST FOR ME?

HOW MUCH WILL IT COST ME?



SANDY WAECHTER

814-212-5377

www.greenwoodinsurancepa.com

GREENWOOD INSURANCE

4535 BUFFALO RD

ERIE, PA 16510

Use a local agent. My services are free of charge

Can You Paint Outside in Cold Weather?

Let's Talk Temperature: Finding The Sweet Spot for Outdoor Painting

The perfect warm weather paint conditions are quickly passing and your project is still on the to do list! You want your brush strokes to lead to stunning, enduring finishes, rather than an artwork of regrets.

What is the magic temperature for outdoor painting:

Meet the ideal range: 50-90 degrees F. These temperatures play the leading role for most exterior house paints. Most products fall between 50-90 degrees F. This temperature generally marks the point where most paints, especially latex and acrylic, promise to behave.

However, Sherwin Williams has gone beyond these boundaries with their latest product:

Latitude Exterior Acrylic Paint

Latitude, with climate-flex technology, sets new boundaries for air, surface and material temps between 35 and 90 degrees. Early birds and night owls, take note! Now Sherwin Williams has stretched seasonal boundaries giving you more time to achieve a flawless application. You can now opt for painting during early hours or finish your painting job after work in the cool air of late afternoon. These golden windows offer peace of mind knowing you can check painting off your list that much sooner!

Tip: Keep all water based paints from freezing! They will look similar to the texture of cottage cheese if they have been frozen and will not be applicable even after thawing. Oil based options are cold weather friendly and will withstand temps below freezing, but will only be applicable between 35-90 degrees F.

One last cold weather consideration is the moisture content in the air and on the surface. All surfaces must be dry and measured with a moisture meter and read less than 40% ideally. Humidity should be no higher than 80% during the time it takes you to apply the paint and until it is fully dry. Always refer to the product data sheet for your products specified moisture conditions.

Remember, that perfect painting day isn't a myth! With the thermometer as your sidekick and the 35 degree rule etched in your mind, you're set to transform outdoor spaces into canvases of joy. So, gear up and wait for that climate sweet spot - your masterpiece awaits under open skies.



Happy Painting!

Sherwin Williams
4053 Buffalo Rd., Erie, PA
in the Giant Eagle Plaza

Sharyn Hillhouse
Sales Representative

Be prepared for slow or stopped traffic as you approach a work zone,
and follow these safety rules:

1

PLAN YOUR TRIP



You may avoid travel delays if you choose an alternate route around the work zone.

2

OBEY FLAGGERS



Flaggers authority overrides conventional control devices.

3

DOUBLE YOUR FOLLOWING DISTANCE



The most common crash type in work zones is the rear-end collision.

4

PROCEED CAUTIOUSLY



Keep moving at a safe speed as you drive through the work zone; do not slow or stop to watch roadwork.

IN THE COMMUNITY

Brevillier Village

Erie's Choice Retirement Facility Eight Years & Counting!

It gives us great joy to announce that Brevillier Village is the Winner for Erie's Choice for Eight Years in a row! Earning this title is no simple feat and comes with great responsibilities. This achievement could not be done without every part of our working team. Each staff member and all departments play an integral role in the success of Brevillier Village. We know that regardless of any title, Brevillier Village is simply the BEST when it comes to providing Quality of Life! We appreciate the continued support from our residents, family members, and entire community.

**Erie's Choice
Retirement/55+ Community**
8 Years Consecutive

Best Apartment Complex
3 Years Consecutive

Best Rehabilitation
2020, 2021 & 2024

Best Employer 101-500+
Top Three Finalist 2024



**Do you own a local
business?**

**Want to be seen as a
BUSINESS IN THE
CREEK?**

We would love to get to know you!

Please email tperrotto@harborcreek.org with the subject: LOCAL BUSINESS

Pointesettia, Standing the Test of Time



As the weather grows colder by the day and our piles of pumpkins come off the front porch, we are beginning to ready for this year's holiday season and the plants and decorations that come around this time of year. Christmas wouldn't be Christmas without beautiful and brightly colored poinsettia plants. They seem to keep us happy and preoccupied with beauty and life indoors while, outside, the snow starts to form and nature goes to 'rest' for the season. We sat down with Josh Skarzenski, Owner of Stan's Garden Center to learn about this seasonal plant and here, in his own words, is what he told us:

"When I am out and around the community many people ask me if it's nice to have all this time off from the garden center. If time allows, I frequently explain all that is still going on behind the scenes at our growing facility. One response that I hear almost every time this conversation occurs is 'Oh you grow your own Poinsettias?' Yes, we have not grown them at our facility for only one year since the early 80's.

"I would like to give you some information about this common holiday plant that may be worthy of discussion at the holiday dinner table. For years and years commercial growers across the entire country were choosing from a very narrow selection of varieties that had originated from the breeding of Paul Ecke Sr. Although the plant was introduced to the United States in early 1800's Paul took note of its late bloom time and began to cultivate it for retail production at the Ecke farm in Southern California in the early 1920's. He is widely credited with the cultivation of what started as a common roadside plant in Mexico into what is now multibillion dollar holiday 'must have'. The Ecke farm began a breeding program to make this plant sturdier, last longer in the market, and more disease resistant. These early efforts stood the hands of time for commercial growers for many decades.

"I personally remember growing large poinsettia plants (stock pots) at our original location on the corner of Saltsman and Cumberland roads. Cuttings were taken from these large stock plants to then produce the smaller pots of finished plants that decorated our homes and places of worship during the holiday season. So 'yes' poinsettias start growing from vegetative snips when we have not even finished planting our flower beds in the summer season. The length of time needed to grow this crop and the endless possibilities that cause the crop to decline may just be the reason you hear me say it's not my favorite plant. In full disclosure I have probably even used the word hate when

discussing it. From a small business perspective, attending to a very finicky crop for over 6 months that has retail value of \$0 the day after Christmas is a bit nerve racking.

"So much in this world has changed drastically in recent years and plants are no exception. The older varieties that had been growing commercially for years have now gone by the way to newer genetics. This revolution in the poinsettia is largely due to the pioneering efforts of the German breeder Selecta. It's not uncommon for the home gardener to stop into the garden center and ask for a very specific plant. 'I would like Sunpatient Lavender Splash, please' is something I expect to hear from a customer. This doesn't really occur when shopping for a poinsettia though, are you looking for red, white, or pink? Behind the scenes new varieties are changing rapidly without you, the customer, even realizing that leaps and bounds that have been made to improve the ease of growing, longevity of flower, durability in transporting, vigor of the root system, etc., etc.

"Poinsettia is still a poinsettia that thrives in certain conditions, but it's way more common to have a home gardener tell me how good they have gotten at keeping their poinsettia growing right into the spring season. I would feel guilty if I didn't at least mention those conditions to help you with yours. Never let them get a chill of cold air, they need to stay warm. Never let them sit in water for any duration, water very thoroughly when the pot feels lighter than normal, but let drain completely and always give them as much bright light as possible indoors. I might just despise this plant a little less now that I can smile and know in the back of my mind that we all had a little help from modern genetics that are changing our gardening world at a rapid pace."



Josh Skarzenski, Owner

**Stan's Garden Center
5001 Buffalo Road
Erie, PA 16510**

Manage Your WM Account - Anytime, Anywhere, Any Device.



WM is committed to finding ways to make your service more efficient, effective and effortless to manage. Powerful new **My WM** online capabilities have been launched to help you adjust services, gain visibility and managing billing.

Do More With My WM



Buy & Adjust Service Online 24/7

Things are constantly changing—including your service needs. My WM helps you adjust the changes



View ETA & Schedule

Get up-to-date information for potential service delays due to holidays or inclement weather



Manage Communication Preferences

Stay informed by receiving the types of information you want to receive and how you prefer to receive it



View Service Visuals

See your container the way your driver sees it with photos and videos



My Billing

Access current and past invoices, save or update payment methods, even make partial payments or pay multiple in-voices in one

Sign Up Today



- ✓ Visit wm.com/mywm to register
- ✓ Once logged in, go to **Manage Accounts**
- ✓ Link additional accounts, if applicable, by providing your Customer ID and billing postal code, which can be found on your invoice

My WM App

Download the app on Google Play or the iTunes App Store. Open the app and select “**Register**” to get set up.



IN THE COMMUNITY

YOUR AD COULD BE HERE AND OTHER SIZES ARE AVAILABLE!

For information contact

TERESA PERROTTO

– Magazine Coordinator –

814-397-1001

tperrotto@harborcreek.org

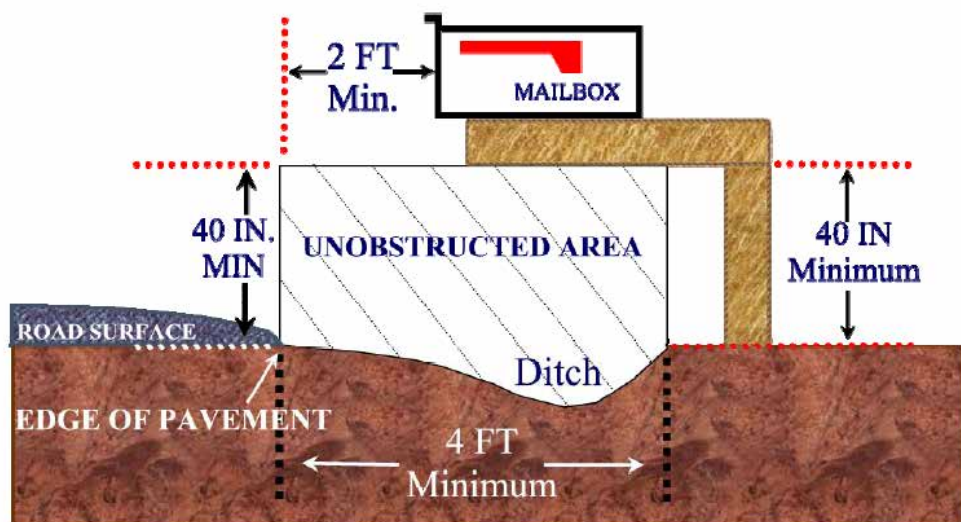
www.harborcreektownship.org



Mailbox regulations in accordance with the diagram below:

1. The support post should not be placed in the drainage ditch. If the berm is too narrow, the post should be placed on the backside of the drainage ditch.
2. Support arms longer than 4 feet should have angle supports which do not extend into unobstructed area which allow for snowplows.
3. The newspaper box should be attached to the support arm. This box should also not extend into the unobstructed area for snowplows.

Harborcreek Township will not repair and will not be responsible for any damage to mailboxes which are not installed to these specifications.





Healthy Harborcreek Dogs

There aren't many food items that some dog lover hasn't popped a pill into to try to get their dog to eat it. Peanut butter and hot dogs have always been popular, but cheese (including canned cheese), liverwurst, and cottage cheese all work well, too. Who knows, maybe your dog will even eat a pill-stuffed olive?

Of course, you don't have to resort to such trickery if you don't want to. You can gently pry your dog's jaws apart by applying firm pressure from either side with your hand over the bridge of his nose and thumb and forefinger on either side, and then tuck the pill way, way back, at the base of the tongue. Then, hold your dog's muzzle closed and skyward and then blow into his nose while stroking his throat.

I guess my favorite to give a dog a pill would be the pill crushers. Where you put the pill into the container, screw the lid on all the way and it makes the pill a powder substance. Than that powder can be mixed into a little can of dog food.

If your dog does not want to cooperate take the dog into the bathroom, shut the door where he/she can not run away. Also it may help to put a leash on the dog and stepping on the leash.

Now you see why most people use hot dogs.

If you're hesitant or inexperienced, make medicating a two-person job: one to hold the dog, the other to apply medication. Some other tips include the following:

Liquid medication.

Ask your veterinarian for some large syringes, with the needles removed. These are marked on the sides to make measuring easy, and they're easier, too, for getting liquid medicine in the right place. Raise your dog's muzzle and lift her lip on one side. Ease the tip of the syringe to the back of the throat and then release the liquid in a slow, steady stream.

Ear medication.

Lay a large towel across your lap and coax your dog to put her head on top of it with gentle massage and encouragement. Apply ear drops, massaging the base of the ear gently.

Eye medication.

Have your pet sit between your legs and hold her muzzle up from behind. Gently apply a line of medication from the tube across the length of the eye, being careful not to touch the surface. Try to hit drops squarely in the center. Close the lid for a couple of seconds to let the medication distribute evenly.

If you have tried all of the above and are still striking out when trying to give your dog medicine, you can ask your veterinarian or any local shelter for advice.

Sandy Zalewski, owner of Pawsability Boarding and Grooming, has been located in Harborcreek for 37 years. She has been grooming pets for 45 years, and also has 45+ years experience as an obedience instructor.

Pawsability Boarding and Grooming

(814) 899-6941

**5603 Buffalo Road
Erie, PA. 16510**



EAST ERIE FAMILY CENTER 6060 IROQUOIS AVENUE
HARBORCREEK, PA 16421
814-899-8113

The Friendliest Place in Town!
(Members & Guests) A Non-Smoking Facility

FULL SERVICE KITCHEN WITH A LARGE MENU
11 am to 9 pm Smoking area out back, out of the elements.

BINGO
Monday & Thursday Nights at 7pm

LIVE MUSIC
Every Saturday Night at 6pm

KARAOKE & TRIVIA
1st & 3rd Friday of the Month at 7pm

2 RV HOOK-UPS Available (Water & Power Only)

AVAILABLE FOR RENT

| | |
|--|---|
| BANQUET ROOM (Seating for 230, a Dance Floor, and a Stage) | SMALL PRIVATE DINING ROOM (Seats 65) |
|--|---|

FOR INFORMATION OR FOR RENTALS CALL 814 899-8113

Welcome All!

POS system powered by Kubinski Business 814-833-4900

SELL PROPERTY SOLUTIONS



CELEBRATING 10 YEARS IN BUSINESS!

- Locally Owned and Operated
- Offering Fast Closings
- All Transactions Are Closed With An Attorney
- Any Condition, No Inspections Required
- Hassle-Free Transactions



CALL TODAY!

(814) 873-7405



Christmas Tree Recycling in HC

When it's finally time to take the Christmas Tree down, remember you can recycle your cut tree by dropping it off at the municipal building. Undecorated trees can be dropped off near the township garage in the marked bin. Trees must not have any lights, decorations or tinsel on them. Artificial trees and holiday plants are not accepted.



SHERWIN-WILLIAMS.

**BRINGING COLOR TO THE WORLD
FOR MORE THAN 150 YEARS.**

Serving Harborcreek at:

4053 Buffalo Rd · In Giant Eagle Plaza

(814) 897-1589

Erie Locations:

2702 W 26th St · (814) 833-3846

815 Peach St · (814) 453-4916

visit us online at: sherwin-williams.com

Laskowski Insurance Agency

Auto · Home · Business · Life

Someday, when you can't be there, the life insurance you purchased will be. Ease the financial burden of your final expenses with a permanent life policy from Laskowski Insurance Agency. It's easier and more affordable than you might think.

Call or come in to get a quote on life insurance

Laskowski Insurance Agency

Owner: Robin M. Margosian

4620 Buffalo Road

Erie, PA 16510

(814) 897-8467



Sarah Roseto King

Roseto-Suter Overhead Door, Inc.

sroseto@hotmail.com

Work: 814-898-2424

Fax: 814-898-2220

4877 East Lake Road

Erie, PA 16511

www.roseto-suter.com



Why is the Windshield in Your Car Important?

Robin M. Margosian, CIC, CISR
robin@laskins.com

Whether you call it a windshield or a windscreen—like they do in some countries—you know the front window of your car provides visibility and protection from the weather, as well as from debris, insects, rocks or anything else that might come at you while driving. But do you know some of the other critical roles the windshield plays? It provides structural support along the rear window in the event of a rollover accident and helps prevent the vehicle from collapsing. It may surprise you to learn that in some cars, the windshield plays a crucial role in front passenger airbag deployment. One of the most important functions of the windshield is to protect passengers inside the vehicle from being ejected in a serious accident.

Since the invention of the automobile, automakers and lawmakers have come a long way to improve windshields and ensure they are as safe as possible. Early windshields were made of plate glass, like the glass used in the windows of a house. As you can imagine, that led to serious injuries when a rock kicked up or a crash occurred. Technology continued to improve safety with the invention of shatter-proof laminated glass and later tempered glass, also known as “safety glass”. Laminated safety glass typically consists of two curved sheets of glass with a layer of plastic or vinyl laminated between them. The process increases the glass strength and when it breaks, causes it to break into small, round chunks instead of shards. Almost all nations now require windshields to stay in one piece even if broken, except if pierced by a strong force. Tinting auto glass has become a popular option over the years. It is not typically needed for safety reasons since the majority of UV-B is absorbed by the glass itself and any remaining UV-B and most of the UV-A is absorbed by the PVB bonding layer. There are laws in place that restrict the use of heavily tinted auto glass in windshields.

Since the windshield is an important part of the vehicle, taking care of it is also important. Make it a habit to check your windshield for damage on a regular basis. When you check your windshield, don't forget to check your wipers. Most people (myself included) are surprised to hear that windshield wipers should be changed every 6-12 months. Cleaning your windshield and other auto glass will also help keep it in good condition. Use a non-ammonia cleaner and microfiber towel to remove dirt without causing streaks. Ammonia based cleaners can damage interior material and window tint films.

If you want insurance to help you cover the cost of repairing or replacing your windshield, make sure you include comprehensive, sometimes called “other than collision” coverage on your policy. Many insurance companies will waive the deductible if the glass can be repaired, however, the size and location of a chip or crack will determine eligibility for repair. Cracks less than a few inches and chips smaller than the size of a quarter are typically repairable. It is not recommended to repair a chip that is right in front of the driver's view, in fact, some states do not allow it. A windshield repair should be completed right after it happens to prevent further damage or to prevent dirt from getting inside the damaged area. The repair should be done by a professional who injects resin into the chip or crack, applies heat that causes it to harden and expand, and smooths the surface when the resin dries.

Winter will be here before you know it. Now is the time to check the windshield and wipers for chips and cracks. A few simple repairs can help maintain the structural integrity of your windshield and keep you and your family safe.

Laskowski Insurance Agency
Robin Margosian
4620 Buffalo Rd
Erie, PA 16510-2207
814-897-8467
robin@laskins.com



**Dog and Cat Boarding
& Grooming**
Sandy Zalewski
814 899-6941
5063 Buffalo Rd, Erie, PA 16510



DISCOVER HARBORCREEK

CELEBRATING A FANTASTIC YEAR WITH THE HARBORCREEK COMMUNITY ENGAGEMENT TEAM

As 2024 comes to a close, the Harborcreek Community Engagement Team reflects on an incredible year filled with memorable events and community spirit. From seasonal celebrations to creative workshops, our team hosted a wide array of activities that brought residents together and highlighted the vibrant spirit of Harborcreek. Among the standout events were HarborCREEPS, where families enjoyed two spooktacular evenings of fun, and our annual Fall Fest, which showcased free events for the youth in our community. Community members also took part in a free bowling day, enjoyed serene moments during the summer yoga series, and celebrated the beauty of nature at HC in Bloom. Creativity flourished in workshops led by local artist Rachel Berlin, as well additional art classes for creating your own wine glasses and another class where participants created their very own greeting cards. Our Summer Selfie Scavenger Hunt encouraged residents to explore our area while capturing their adventures, and the Ice Cream Contest was a delightful treat for all ages.



Sign up for our Email List!



As always, we were thrilled to partner with local businesses for pop-up events at venues like 6 Mile Cellars and KingView Meadhouse and Winery, further supporting our local economy and fostering community ties.

None of this would have been possible without our generous sponsors and the enthusiastic participation of residents. Your support made each event a success, and we are grateful for the connections we've built together.

As we look ahead to 2025, we are excited to announce that an even bigger and better lineup of events is in the works. We invite you to join us in shaping the future of our community. If you're interested in getting involved, please reach out to us at discoverharborcreek@gmail.com. Thank you for being a part of this incredible journey. Here's to another year of community engagement and togetherness!



Free Swim Afternoon



Free Bowling

Harborcreek Community Engagement Team Highlights - Just a few of our events from 2024

HC IN BLOOM





Free Yoga



Summer Ice Cream Contest

HarborCREEPS



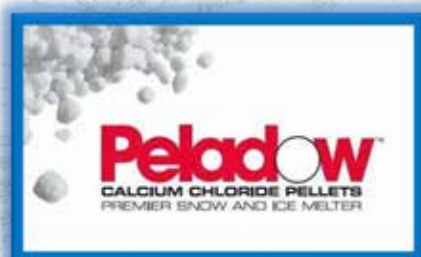
Selfie Scavenger Hunt



ALICE SUPPLY

MULCH • STONE • COMPOST • SAND • SOIL

5051 IROQUOIS AVE ★ 814-899-3644



IN THE COMMUNITY



Harborcreek Pickleball is Now Twice as Nice

Harborcreek Pickleball courts have recently doubled to four regulation courts at Whitford Park. Supervisor Steve Oler recently obtained funding from Erie County for the expansion of Whitford Parks courts and they're now open for play. The paving was done by Harborcreek Township personnel and plans also include adding fencing along the new courts – look for that improvement early in the Spring of 2025. Look for other fencing upgrades throughout HC's Park system including Harborcreek Community Park baseball and softball fields.



REMEMBER!

**Flashing Blue Lights means an
Emergency Response Volunteer
headed to their Fire Department!**

Please pull over and let them go by,
the emergency they are responding to
might someday be your own!



NO PARKING ON TOWNSHIP ROADWAYS

A reminder to all residents and visitors in Harborcreek, there is NO PARKING on township roadways or in the township right of ways between October 15th and April 15th. This ordinance is in place to allow township snowplows to remove snow and ice safely and efficiently off the roads. Your cooperation is greatly appreciated.

Homecoming Happenings



The Harbor Creek Alumni Association added flare to homecoming weekend. There was something for everyone! A food truck festival, post-game fireworks, and the Huskie Hustle.

The first sight (or smell) you may have noticed as you entered campus Friday night was the parade of food trucks along the Junior High parking lot. From 4:30-7:30 pm, food trucks offered a place to grab a bite to eat while catching up with friends; old and new. It was easy to see from the smiles and handfuls of food that many visitors had a chance to enjoy Brady's Chuckwagon, Cluck Truck, Smiley's Ice Cream, and Dobbin's Dogs. At the stadium's entrance, the Alumni Association tent handed out alumni pins and sold alumni T-Shirts. We met with alumni from the class of 1965 and those who traveled from Florida to catch the big game. Just as the food settled, fans enjoyed post game fireworks that celebrated our victory.

Sunday morning's 2nd Annual Huskie Hustle fundraiser event was greeted with clear skies and runners warming up on the track. This year's race drew in a larger number of runners; welcoming 46 participants and their cheerleaders. The top female and male winners of the Hustle Mile were Kelsey Bragano (6:14) and Bradley Hall (6:23). Top female and male winners of the Mid-Hustle Mile were Alexandra Bryan and Tyler Bryan. The final event was the Huskie Pup 100 M dash which included 15 runners ranging from ages 1-10. Race proceeds benefit "Be the One".





at Harbor Creek High School



Thank You, Donors!

Brigham Plaster Systems
Big White Trailer
Harborcreek Market Place
Creative Imprints
Mo's Photos
Twelve Fifteen
Maurice Szklenski Grape Farm
Harborcreek Auto Gallery
Akin Insurance Consulting
Bauer Specialty
Contine Corp.
Oak Hill Insurance Company
Harbor Creek School District Foundation



BETHE

ONE



Connect with Harbor Creek School District

Website:

[HCSD.IU5.org](https://www.hcsd.iu5.org)

Phone:

[814-897-2100](tel:814-897-2100)



Facebook:

[Facebook.com/HCSDHuskies](https://www.facebook.com/HCSDHuskies)



STAY CONNECTED WITH HCSD

Clark Elementary:



[Facebook.com/ClarkElementaryHCSD](https://www.facebook.com/ClarkElementaryHCSD)



[x.com/ClarkElem_HCSD](https://twitter.com/ClarkElem_HCSD)



[Instagram.com/Clarkelementary](https://www.instagram.com/Clarkelementary)

Klein Elementary:



[Facebook.com/KleinElementaryHC](https://www.facebook.com/KleinElementaryHC)



Rolling Ridge Elementary:



[@RollingRidgeHC](https://www.facebook.com/RollingRidgeHC)

Junior High:



[Facebook.com/HCJH.Huskies](https://www.facebook.com/HCJH.Huskies)



[x.com/HCJuniorHigh](https://twitter.com/HCJuniorHigh)



[hcjuniorhigh](https://www.instagram.com/hcjuniorhigh)

Senior High:



[Facebook.com/HCSRHIGH](https://www.facebook.com/HCSRHIGH)



[hc_senior_high](https://www.instagram.com/hc_senior_high)



Dr. Buckley Cook
Superintendent



WELCOME TO THE TEAM

DREW MORTENSEN
CURRICULUM DIRECTOR

COREY BAILEY
TECHNOLOGY TEACHER

CHRISTOPHER GENIS
ELEM. LEARNING SUPPORT
TEACHER

LINDSAY MANDIC
JH MATH TEACHER

AMY MLAKAR
5TH GRADE ELEM. TEACHER

ABIGAIL SKINNER
ELEM. MUSIC TEACHER

TAYLOR HILINSKI
ASST. PRINCIPAL SR. HIGH

JAMES BROWN
SCHOOL POLICE OFFICER

PEYTON HEARN
JH EMOTIONAL SUPPORT
TEACHER

MARY MARNELLA
1ST GRADE ELEM. TEACHER

MICHELLE OLSON
ELEM. COUNSELOR

NOAH WAGERS
HEALTH & PE TEACHER

TROY BUDZISZEWSKI
ATHELTIC DIRECTOR

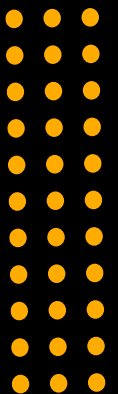
ABIGAIL COX
SCNDRY. LEARNIING
SUPPORT TEACHER

ALLY KINCADE
ELEM. AUTISTIC SUPPORT
TEACHER

JAYDAN MILLER
JH ENGLISH TEACHER

COLIN SEARS
SH COUNSELOR

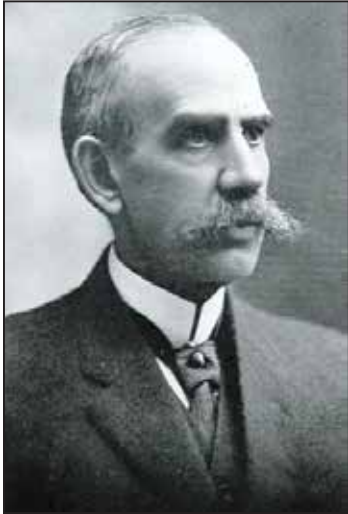
ANGELA WEBER
SCNDRY. LEARNING
SUPPORT TEACHER



A Long Life Seized

A Harborcreek native's legacy of scholarship, law, journalism, and politics

By the Harborcreek Historical Society



<https://www.library.pasen.gov/>

When Henry Alden Clark was born to Chauncey and Emeline Elizabeth Clark on January 7, 1850, Harborcreek had a population of about 2,000 people, Zachary Taylor was President, and the railroad "Gauge Wars" were on the horizon. The grandson of Harborcreek pioneer Henry Clark, this Henry was born to Township prominence. His grandparents settled on the bank of Six Mile Creek near the turn of the 19th century on land Thomas Rees had surveyed only a few short years prior. The family bottled and sold water from a

nearby spring along with their son David. David, Henry's uncle, later became one of the oldest Township residents, living on his farm on Clark Road before his death in 1884. Another uncle of Henry's was the Reverend John Wesley Clark, a prominent United Brethren minister. The Clark family had roots in England and ancestors have even been traced to the *MAYFLOWER* crossing.

Henry Alden Clark attended Erie Academy in 1864, after which he attended the State Normal School in Edinboro, the Willoughby Collegiate Institute in Ohio, and then ultimately graduated from Erie Central High School in 1870. While Henry's education to this point had been geographically scattered, it was clear he was academically inclined and ready to take his talents wherever he found himself.

Continuing in his scholarly ways, Henry attended Harvard University (then College), the foremost of educational institutions, particularly in the mid 19th century. On January 25, 1873, Henry along with nine of his classmates, met to await the first issue of the *Magenta*, the Harvard precursor to the University's storied newspaper, *The Harvard Crimson*. Clark is credited with being a cofounder of the *Crimson*, a publication with esteemed former editors such as Franklin Roosevelt and John F. Kennedy. Clark graduated from his undergraduate studies in 1874.

Henry moved on to Harvard Law School, graduating with an L.L.B. in 1877. By December of the same year he had passed the Massachusetts bar and was admitted by March of 1878. He practiced as a lawyer in Fall River, Massachusetts, often lending his services to the Edison Light Company until 1882 when he moved back to Erie. Archived papers show an ongoing business relationship with Thomas Edison himself. While a member of the Pennsylvania bar, he also directed the Erie Dispatch Publishing Company and co-owned the *Erie Gazette* between 1890-1892. He quit journalism to work full time as a law partner with his father-in-law David McCreavy, a Civil War veteran and Pennsylvania Senator from Millcreek.

Clark's political career began locally, perhaps inspired by his father-in-law, serving as Chairman of the city and county Republican Party committees during the 1890s. He also served as Erie City Solicitor from 1896 to 1899. In 1911, at the age of 61, Clark was elected to the Pennsylvania State Senate for the 49th district. He then filled the seat of the resigned Albert Everton Sisson from 1912-1916. He served on several committees including Appropriations, Finance, and Judiciary. He did not run for reelection. After his service to the



R & S ELECTRIC

Residential & Commercial
Free Estimates Insured
814-323-6747
Randy Nowakowski - Owner

PA 006262



Expressions

Salon and Spa

4760 East Lake Road | Harborcreek
814.898.3363
Mon-Thurs 9am-8pm | Fri 9am-6pm | Sat 9am-3pm

Check out our Facebook to view results from our talented staff
Myexpressionsstudio.com | expressions4525@hotmail.com

Follow Us on Instagram | expressions4760

State, he was elected to the 65th Congress of the United States as a Representative for the 25th District. He served one term in Washington from 1917-1919. Finally, upon his return to Erie once more, he acted as the Judge of the local orphans' court from 1921-1931.

Henry died on February 15, 1944 at the age of 94. An extraordinarily simple headstone in Erie Cemetery marks the burial site of Harborcreek native Henry Alden Clark. A small Clark family cemetery is appropriately located on Clark Road where his mother and



findagrave.com

grandparents are interred, however Henry's father Chauncey was also buried in Erie Cemetery. In his retirement years, Clark returned to Harvard, reflecting on changes to the school in the years since his graduation. A 1936 article by *The Crimson* details his visit. Worth noting, Henry's wife Sophy McCreary Clark, along with the esteemed Sarah Reed, was one of the founding members of the Presque Isle chapter of the Daughters of the American Revolution. They had two children.

The University of Michigan, Duke University, and Rutgers University hold correspondence and papers related to Henry Alden Clark, David McCreary, and family members from the early 19th century through the mid 20th. In addition to the holdings of the Harborcreek Historical Society, special thanks to those institutions, the *Harvard Crimson*, and Pennsylvania Senate records for the sources to this article.

Gifford-Blanchfield House Hours:

The Society's offices feature a research library, local history exhibits, and collections care space. It is open Saturdays 10:00 am – 2:00 pm, Wednesdays 12:00 – 4:00 pm, or by appointment. For additional information, contact us at (814) 899-4447 or harborcreekhistory@gmail.com, or visit our website at www.harborcreekhistory.org.

Acknowledgement of the Class of 1960:

The Harborcreek Historical Society thanks the Harbor Creek School District graduating class of 1960 for a recent donation in memory of classmate Eileen Richter. The donation will support the ongoing use and maintenance fees of the fire/security alarm system of the Gifford-Blanchfield House. The Class of 1960 funded the purchase of the system equipment and installation last year. We wish to express our appreciation to the Class of 1960 for this generous memorial contribution.

Trenton Baker

Owner/Operator

814-450-5407

PA #126733

- Framing
- Drywall Hanging/Finishing
- Plaster
- Interior/Exterior Painting
- Water Damage Repair
- Deck Paints and Stains
- And So Much More...



Free Estimates

Fully Insured



DUSCKAS

Funeral Home
AND
Cremation Services, Inc.

2607 Buffalo Road | 814.899.7656
Nancy E. Dusckas, Supervisor, Main Office

Dusckas Funeral and Cremation Services Harborcreek
5151 Buffalo Road | 814.315.0911
Aaron T. Bowers, Supervisor, Branch Office

www.dusckasfuneralhome.com

VOLUNTEER FIRE DEPARTMENTS

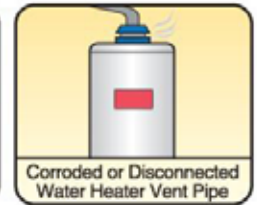
Harborcreek Fire Department Social Hall is currently seeking a Social Hall Manager

Please contact President Doug Binney
with any questions or an application. 814-899-8304

Pay can be discussed with applicant upon receipt of application.

Duties include:

- Works with the Catering Chef, Bartenders, and Housekeepers to schedule/coordinate personnel requirements for functions
- Develops detailed plans for each event
- Diagrams buffet tables, guest tables, and other function room set-up needs for special events
- Holds pre-function meeting with clients, servers, bartenders, and cooks to ensure smooth, efficient service
- Assists with on-going sales efforts for group and local function business
- Assists in the preparation of the marketing plan and annual budget to increase the profitability of the banquet operation; monitors performance against budgets; recommends corrective actions as necessary to help assure that budget goals are met
- Assures proper inventory of all service equipment, supplies and linen to meet required needs
- Ensures sufficient food inventory (including perishable and non-perishable food, soda, beer, and alcohol) for events
- Handles guest complaints
- Hires, trains, supervises, and evaluates staff
- Regularly inspects all front- and back-of-the-house service areas and equipment to assure that sanitation, safety, energy management, preventive maintenance, and other standards for the department are met
- Assures the neatness, cleanliness, and safety of all social hall areas
- Conducts after-event evaluations to improve quality and efficiency of functions
- Ensures that all appropriate charges are billed correctly to each event
- Ensures that all Social Hall related bills are paid
- Maintains QuickBooks financial records for Social Hall Accounts
- Coordinates with financial auditor for taxes
- Coordinates appropriate licensing / regulatory activities
- Ensures operation and maintenance of all Social Hall equipment
- Recommends advertising
- Performs other tasks as requested by the Fire Department President, Board of Directors, or Social Hall Committee



Don't Let These Happen to You!



Hello from Harborcreek Fire Company



With the colder weather rolling in, Harborcreek Fire Department would like to remind the community about a few things to consider about heating.

If you are using wood burning stove to supplement your residential heating, it is recommended to get annual servicing performed. Many house

fires could be avoided if annual maintenance is kept up. Harborcreek Fire Department does not endorse an in particular company, but there are many companies in the area that offer inspections and cleanings.

Also with cooler temperatures, furnaces are now starting to be turned on as well, especially for those that don't have supplemental heating. We HIGHLY encourage residents to get Carbon Monoxide (CO) detectors if they don't already have them. CO is a colorless, odorless gas formed by the incomplete combustion of fuels. CO that is known as a Silent Killer is due to the fact that you can't tell it's there unless you have a detector, or you start feeling symptoms. CO symptoms can present with headache, weakness, dizziness, nausea, confusion, drowsiness, but can lead to unresponsiveness and death. Annual upkeep and maintenance of your furnace can also help prevent these emergencies.

Please take these couple of tips, and try not to see us in the time of an emergency.

John Daisley, Assistant Chief, Harborcreek Fire Department

Greetings from the Brookside Volunteer Fire Company

With winter weather fast approaching we want you to be aware of a few tips that can keep you and your family safe this winter season.

First off driving in the winter means changing the way you drive. Snow, sleet and ice can lead to hazardous road conditions. Drivers should take precautions to ensure they will arrive safely at their destination. By doing a few things like checking the weather before you go out, making sure that your car is prepared for winter and knowing the best practices for avoiding accidents you should have little trouble driving in the winter weather.

Another thing that most people don't consider is the danger in shoveling snow. Shoveling snow is a major winter activity in our area and taking a few precautions can help you prevent unnecessary pain and suffering. Many doctors believe that picking up a shovel and moving hundreds of pounds of snow, after doing nothing physical for several months can be a big strain on your heart. Do not pick up a shovel without a doctor's permission if you have a history of heart disease. Doctors offer a few recommendations before and as you shovel, like taking it slow and stretching before



you shovel, push the snow rather than lifting it and do not work to the point of exhaustion. If you feel tightness in the chest or dizziness, stop immediately. Remember a clear driveway is not worth your life.

And finally we address the silent killer, Carbon Monoxide poisoning. Carbon Monoxide detectors save lives, but less than one-third of homes in America have one installed. With December and January at the peak of CO poisonings please remember these following tips: Replace the battery for your home's CO detector each spring and fall, do not heat your home with a gas range or oven

and never run a car or truck inside an attached garage. And if your CO detector does happen to sound do not try and find the source. Immediately move outside to fresh air, call the gas company or 911 and do not enter the structure until someone of authority has given you permission.

By following all or some of these recommendations you and your family can enjoy this winter season safely while counting down the days to summer of 2025.



★ *Renewals in progress now until December 31*

DINING
DRINKS
&
SMALL GAMES OF CHANCE

4896 East Lake Road **(814) 899-9573**

JOIN TODAY!

Online at:

www.hosecompany27.com

OPEN 11am - 11pm DAILY



DEVELOPMENT UPDATE

**24 Hour
Emergency
Service**

- Tree, Stump & Brush Removal
- Split Firewood Delivered
- Crane Services
- Storm Damage

**STAR
Tree Service**

814-864-2012 • 814-434-5719
740 Lee Road • Waterford, PA 16441

**26 Years
Experience**

PA033971

Harborcreek Township Residential Realty Transfer Report June 2024 - September 2024

| Address | Amount |
|------------------------------|-----------|
| 335 Baker Ave | \$190,000 |
| 531 Baker Ave | \$169,900 |
| 1194 Bartlett Rd | \$210,000 |
| 425 Bonnie Brae | \$365,000 |
| 355 Bonnie Brae | \$253,600 |
| 402 Bonnie Brae | \$282,000 |
| 6297 Buffalo Rd | \$180,000 |
| 7557 Buffalo Rd | \$345,000 |
| 409 Cambridge Rd..... | \$229,000 |
| 2041 Carver Ave..... | \$309,900 |
| 3973 Cherry Blossom Dr | \$272,000 |
| 1912 Clark Rd | \$150,000 |
| 3167 Clark Rd | \$132,000 |
| 3703 Cumberland Rd..... | \$185,000 |
| 3537 Depot Rd | \$336,000 |
| 4051 Dominion Dr | \$325,000 |
| 4269 E South Shore Dr | \$220,000 |
| 7207 East Lake Rd | \$88,000 |
| 7186 East Lake Rd | \$225,000 |
| 5940 East Lake Rd | \$260,000 |
| 6659 East Lake Rd | \$179,550 |
| 5203 Eragas Dr | \$257,500 |
| 1033 Fair Ave | \$75,000 |
| 5404 Frederick Dr | \$394,900 |
| 4201 Freeman Rd | \$249,900 |
| 3916 Freeman Rd | \$200,000 |



First Presbyterian Church of Harborcreek
6724 Buffalo Road

"Loving and serving God and others as Jesus does"

Join us each Sunday!

9:15 a.m. Worship,

10:30 Brunch,

followed by a movie (adults) and Sunday School (kids)

Upcoming Events:

Choir Christmas Cantata - Sunday, Dec. 22 at 9:15 a.m.

Christmas Eve service - 5:00 p.m.

Check us out on our website, hcpresbyterian.org, and on Facebook and Youtube!
Our church family is here for you. Neighborhood Outreach cupboard is located at the church entrance. Check it out! Feel free to take what you need.

Denny's Service Center
2817 Buffalo Rd.
814-899-1360

PA Inspection
General Repairs

John Denny
Owner

HAIR
Creations
BY BECKY & BARB
5158 BUFFALO ROAD
ERIE, PENNSYLVANIA 16510
PHONE (814) 897-8805

| | |
|-------------------------------|-----------|
| 4066 Freeman Rd | \$222,000 |
| 4059 Freeman Rd | \$208,000 |
| 7078 Garfield Ave | \$249,900 |
| 2131 Hannon Rd | \$199,000 |
| 4561 Hannon Rd | \$168,000 |
| 3713 Harbor Ridge Tr..... | \$380,000 |
| 3347 Hoover Hts | \$333,000 |
| 2321 Hunters Ridge Dr | \$365,000 |
| 6231 Iroquois Ave | \$50,000 |
| 6547 Iroquois Ave | \$76,010 |
| 6401 Iroquois Ave | \$108,000 |
| 1937 Knoll Ave | \$126,000 |
| 4647 Ledgewood Ct | \$520,000 |
| 5005 Lee Ave | \$10,000 |
| 2265 Lorwood Dr | \$379,000 |
| 4084 Magnolia Blossom Dr..... | \$440,000 |
| 4101 Maple Grove Dr..... | \$369,900 |
| 4138 Mountan Laurel Dr | \$590,000 |
| 6857 Mulligan Ct | \$409,000 |
| 3021 Nagle Rd..... | \$150,000 |
| 2812 Nagle Rd..... | \$162,500 |
| 4554 North Woods Dr..... | \$320,000 |
| 2211 Parker Ave | \$200,000 |
| 6093 Redwood Dr | \$261,000 |
| 3906 Ridge Pkwy | \$200,000 |
| 3263 Saltsman Rd..... | \$115,000 |
| 2012 Saltsman Rd | \$265,000 |
| 7065 Sandy Tr | \$340,000 |
| 9042 Sawmill Rd | \$199,900 |
| 3750 Station Rd..... | \$90,000 |
| 3723 Station Rd..... | \$272,500 |
| 6435 Station Rd..... | \$400,000 |
| 7074 Stoney Trace Ln..... | \$720,000 |
| 1365 Troupe Rd..... | \$250,000 |
| 1260 Villa Sites Dr | \$167,000 |
| 590 Walbridge Rd..... | \$362,000 |

Subdivision Plans Approved for the period June 2024 thru September 2024

Board of Supervisors reviewed and approved seven (4) consolidation plans that resulted in 42 parcels combined into 1 lot, 15 parcels combined into 1 lot, and 4 lots combined into 2 lots.

Land Developments

No Land Development Plans were reviewed

Harborcreek Township
A Great Place to Live, Work, and Play!

Welcome to New Businesses:

UPS will be opening a store in Harborcreek. The store location is 4500 Buffalo Road in the Price Rite Plaza. No details on when the UPS store will open. Harborcreek Township website www.harborcreek.org will post additional information when it becomes available.

B.L. Osborn Construction Group has opened their contractors office at the former More than Flowers location at the corner of Hannon and Buffalo Road (5093 Buffalo Road)

Wood Fire BBQ opened its take out service at 4655 Buffalo Road. Even though there is no inside dining, there is limited seating outdoors.

A Citizen Bank is now located at the former AAA building located at 4430 Buffalo Road.

Harborcreek Welcomes the New Businesses to the Community!

Zoning Permits Issued (June 2024 thru September 2024)

| | | |
|--------------------------|----------------------------------|-------------------------------|
| Residential | 44 Zoning Permits Issued | 9 Single Family Homes |
| | | 5 Residential Additions |
| | | 7 Garages/Carports/Pole Barns |
| | | 16 Decks/Enclosed Porches |
| | | 4 Sheds |
| | | 3 Swimming Pools |
| | 4 Demolition Permits Issued | 1 Multi-family |
| | | 3 Single Family Dwellings |
| Commercial | 16 Zoning Permits Issued | 2 Commercial Renovations |
| | | 13 Signage |





Wishing You
and
Our Entire
Community
Warmth,
Peace,
and Joy,
Now and
Throughout
the
Coming Year



Brevillier Village

Join Our Team!

It Takes A Village!

We are a non-profit housing and healthcare specializing in housing and healthcare for older adults.

Our department teams are like family!
We provide person-centered care with an emphasis on respect and dignity.

**Erie's Choice Retirement Facility
welcomes qualified candidates to
apply to work with our team!**

Job Perks: Respect & Dignity Culture, Flexible Schedule, Baylor Program, Shift Differential, Person-Centered Care, and Mission Driven!

EOE

**Immediate
Openings**

**Nursing
RN & LPN
CNA & PCA**

Dining Services

Housekeeping

Maintenance



SCAN HERE



TO APPLY

(814) 899-8600



WWW.BREVILLIER.ORG

your **HARBORCREEK**

Harborcreek Township
5601 Buffalo Road
Harborcreek, PA 16421

PRSRT STD
US POSTAGE
PAID
ERIE PA
PERMIT NO. 869

A photograph of a man and a young girl sitting on a wooden dock, fishing. The man is wearing a hat and a vest, and the girl is also wearing a hat. They are both smiling and looking at each other. The background shows a calm body of water with several boats in the distance, and a sunset sky with orange and yellow clouds. The scene is peaceful and captures a moment of bonding between generations.

When it comes to getting you back to what you love

We're here

UPMC Hamot understands the challenges of aging. That's why we offer leading experts in every specialty, from hip pain to advanced cancer treatments. We also have Erie's largest team of doctors providing nationally recognized, comprehensive cardiac and stroke care. UPMC is committed to getting you on the road to feeling like yourself again. For expert care for older adults, visit **[UPMCHamot.com/SeniorHealth](https://www.upmchamot.com/SeniorHealth)**.

UPMC | HAMOT



IN THE COMMUNITY

BUSINESS IN THE CREEK

